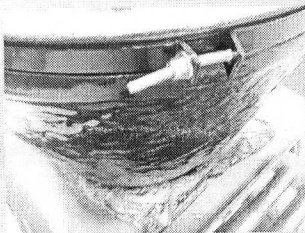
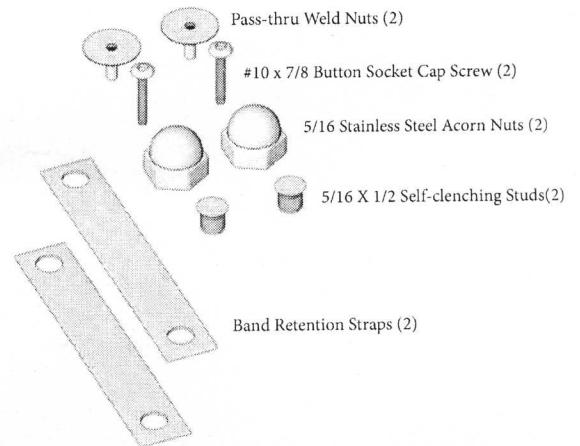


Clip Kit for Primo XL

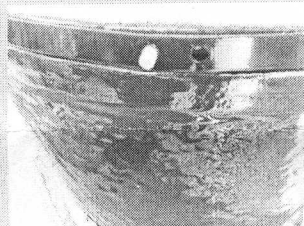
Primo has determined that the Primo XL lower hinge band can loosen over time. The Clip Kit is designed to prevent this from occurring. To install the Clip Kit, you will need the following tools:

- 1/8" Allen Wrench
- 9/16" Wrench
- 1/4" Masonry Bit and Power Drill
- Die Tap

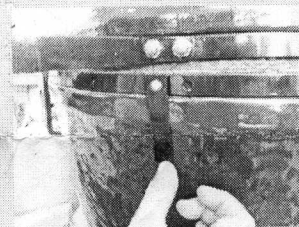
Parts List



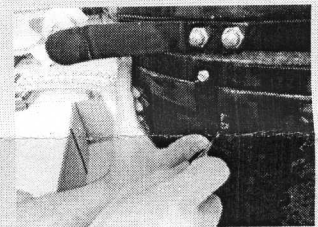
Loosen lower hinge band.



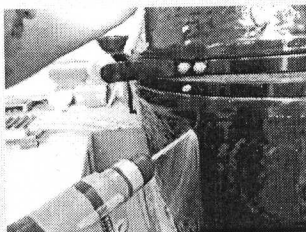
Insert self-clenching stud in inner hole.



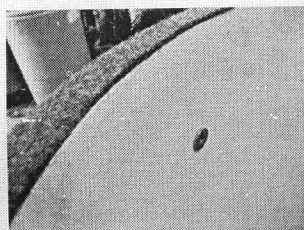
Place retention band on stud to determine placement of drill hole.



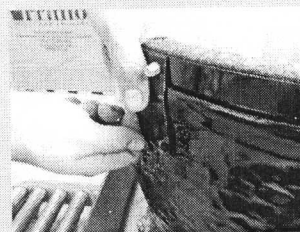
Use die tap to set pilot hole for drilling.



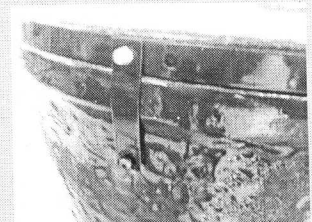
Drill hole.



Insert pass-thru nut through hole via the inner wall of base.



Affix button socket cap screw in pass-thru nut and tighten with allen wrench.



Affix acorn nut to stud and tighten with wrench.

Repeat procedure for opposite side of lower hinge band. Re-tighten hinge band.